

Penwith Landscape Partnership - That's our Parish Project

Local Landscape Character Assessments (LLCA)

Training Day

Kath Statham for CEC Ltd

Supported by Nicole Broadhurst for PLP

That's our Parish

Yth yw agan Pluw



Local Landscape Character Assessment for Penwith
Parish LLCA Training



Structure for the Day

10am	Arrival and tea / coffee
10.10am	Welcome and Introductions – What to expect from the day. Housekeeping. Signing in.
10.15am	Workshop 1 – Outdoors – Reviewing Field Survey Forms and how the different categories may be presented in the field / what to look for.
11am	Workshop 2 – Indoors – Understanding the Landscape Character Hierarchy- Reviewing the National Character Area 156 West Penwith profile, Landscape Character Area descriptions for LCA03 Penwith Central Hills and LCA04 Mount's Bay. Looking at the draft Landscape Character Types for Sennen to compare to NCA and LCA. Discussion.
11.30am	Workshop 3 – Indoors - Reviewing the Parish Packs – Maps and Background Information. Marking up Maps and reviewing Draft Key Features Map. Reviewing LCTs and example photos. Discussion. Summary of Morning Session.
12.00pm	Lunch break (Pasties, tea and coffee provided).
12.20pm	Presentation – Introduction to Field Work.
12.30pm	Workshop 4 – Outdoors - Field Work Practice - completing survey sheets and taking photographs at two locations. This is an outdoor activity and we will drive in shared cars to suitable areas to practice. Please wear suitable clothing and sturdy footwear (walking boots or wellies, do not wear sandals or shoes with no grip). Bring drinking water and sun screen / hat.
3.30pm	Return to venue – tea, coffee, biscuits. Informal discussion / questions.
4.00pm	What next – likely dates and survey timeframes, marking up plan of Parish survey areas per team. Distributing survey material and equipment to volunteers.
4.15pm	Close

That's our Parish

Yth yw agan Pluw

Local Landscape Character Assessment for Penwith

Parish LLCA Training

Workshop I – Survey Point



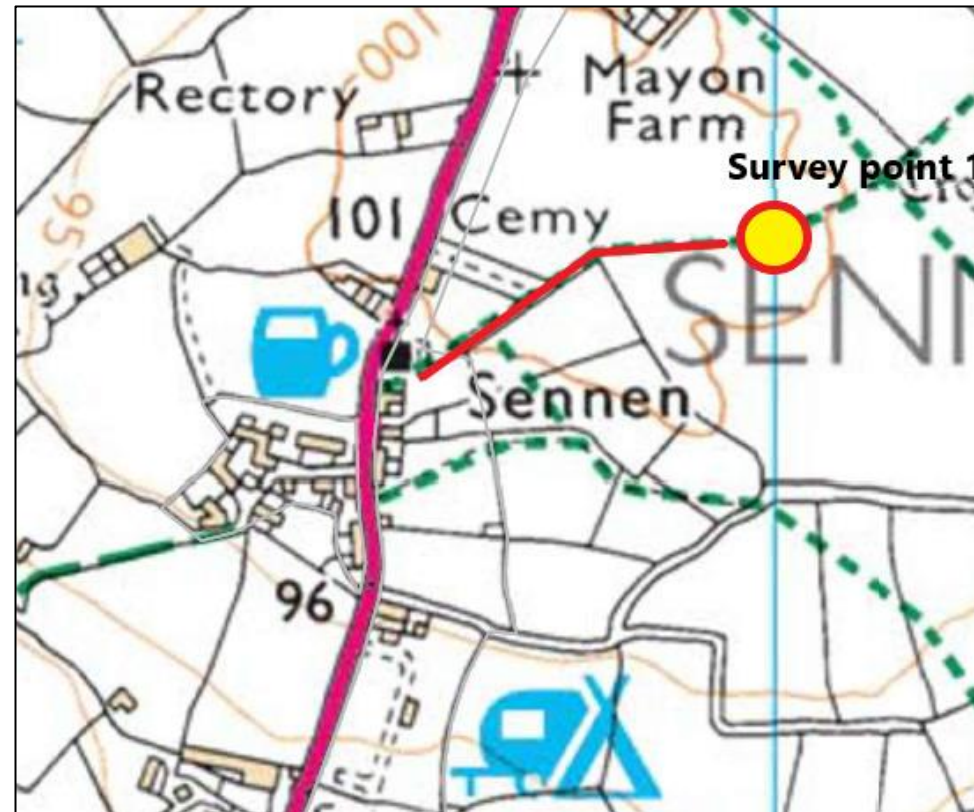
That's our Parish

Yth yw agan Pluw

Local Landscape Character Assessment for West Penwith
Parish LLCA Training – what is PLP and Project 1.2

Workshop I

- Head out of the cemetery following the public footpath heading east.
- What to look at to describe the landscape character:
 - Landform, drainage, geology, biodiversity – what is obvious, what isn't?
 - Land use, vegetation cover, field patterns - discuss field sizes and hedges.
 - Buildings and settlement pattern, transport, infrastructure – what can you see?
 - Historic features, distinctive features, scenic and aesthetic qualities, visual amenity and key views – does anything stand out?
- Return to venue, run through survey form with event lead again to recap.



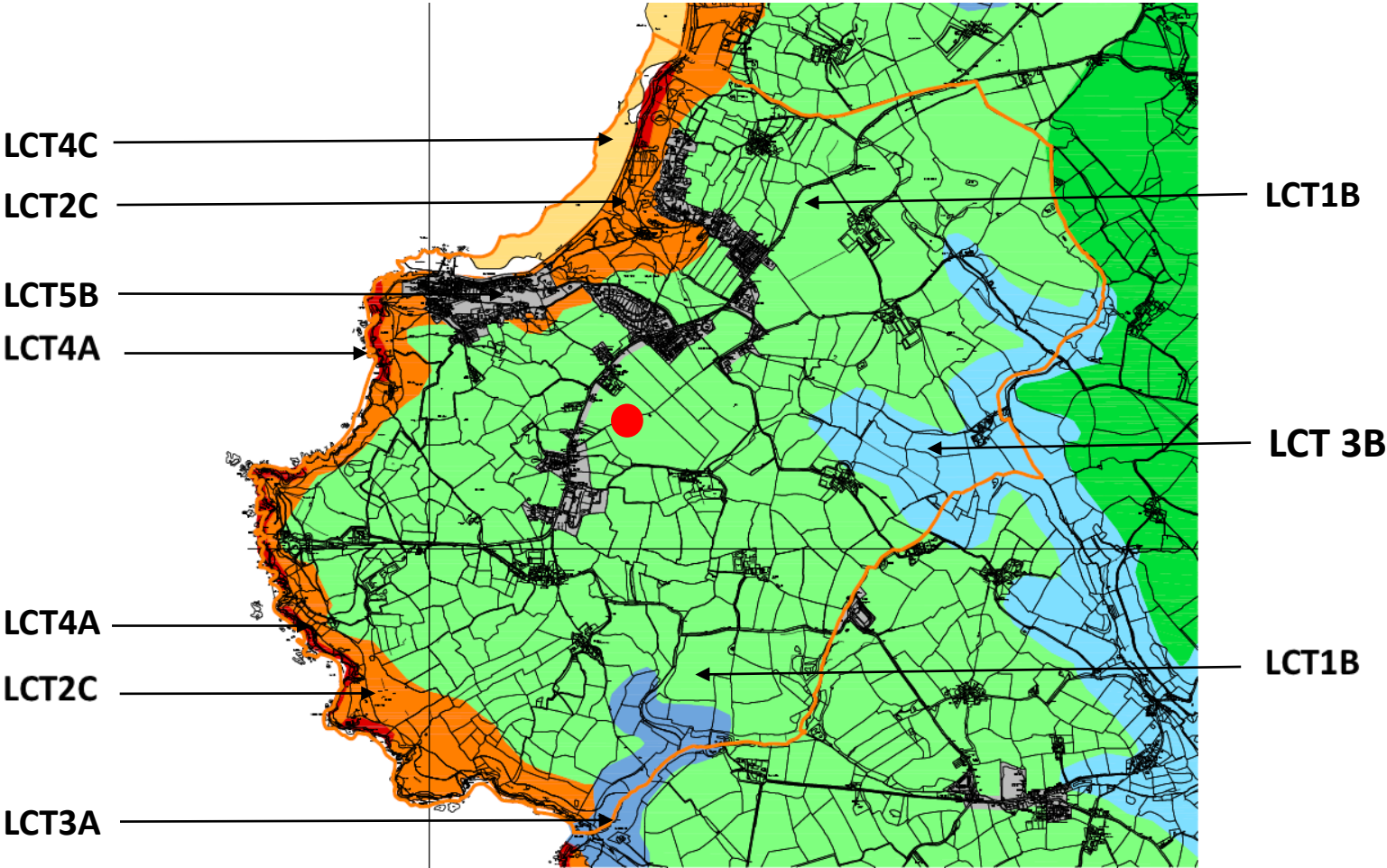
That's our Parish

Yth yw agan Pluw

Local Landscape Character Assessment for Penwith

Parish LLCA Training

Workshop I – Survey Point I



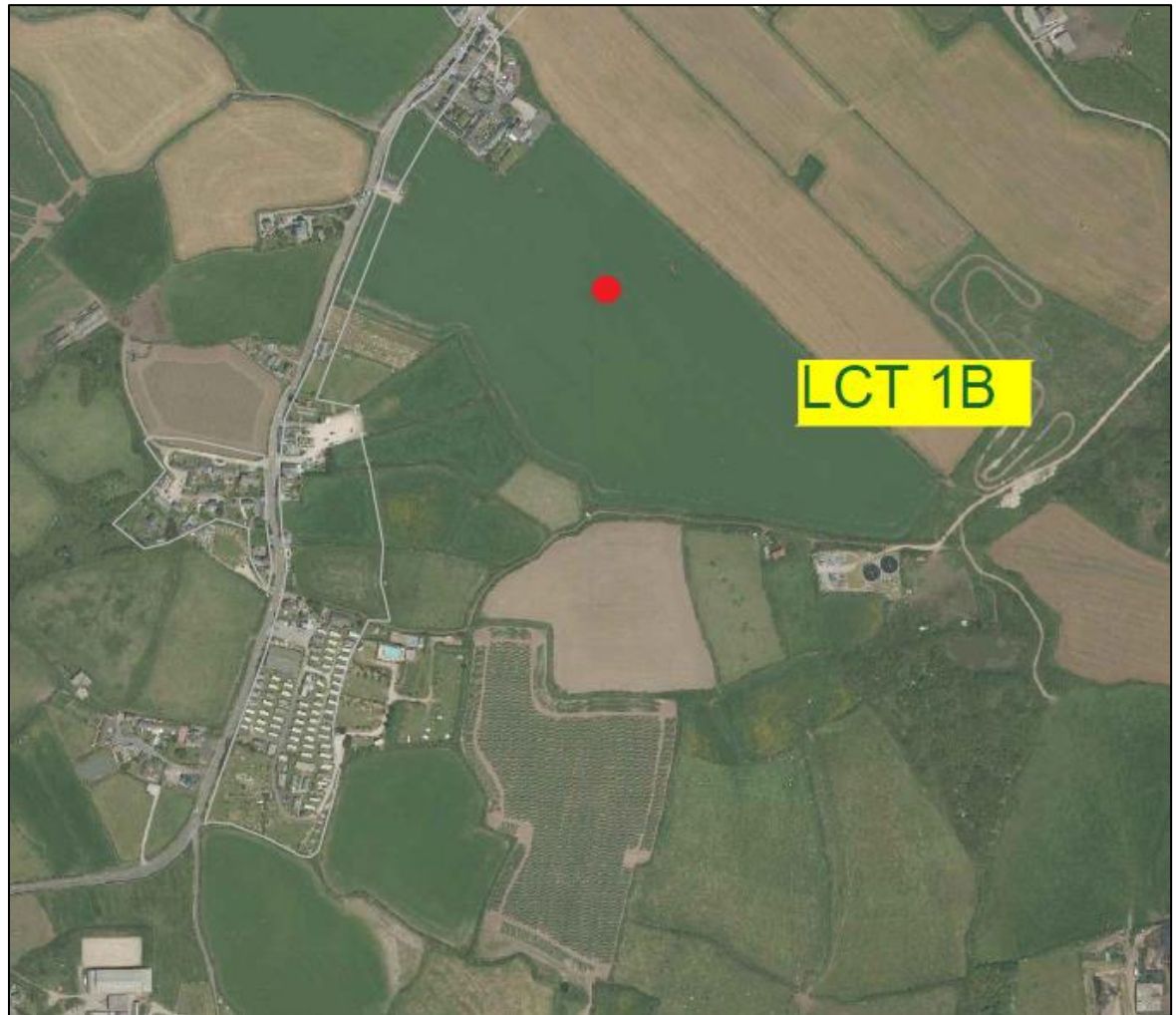
That’s our Parish

Yth yw agan Pluw

Local Landscape Character Assessment for Penwith

Parish LLCA Training

Workshop I – Survey Point I



That's our Parish

Yth yw agan Pluw

Local Landscape Character Assessment for West Penwith

Parish LLCA Training – what is PLP and Project 1.2

LLCA Fieldwork – recording information

Parish: <u>Sennen</u>		LCT type:		Date:	Assessor:
Character attribute	Key Features	Guidance notes			Assessor comments
Topography and drainage	Landform / Topography Is the area high ground or low; is it flat or sloping; how steep are the slopes; are any valleys wide or narrow; do they curve or run straight; which way does the land run?	Flat	Cliffs	dry valley	
		Undulating	plateau	narrow valley	
		Rolling	hills	broad valley	
		Steep	shallow	Harbour	
	Drainage / Hydrology Are there any water bodies obvious within the landscape, are there any which are identified more by the vegetation around them, are there obvious flood plains / wetlands, are there any signs of manmade flood control?	River	Reservoir	Marsh	
		Stream	Ditch	Spring	
		Pond	Estuary	Fast flowing	
Geology, Soils and Biodiversity	Geology and Soils Is the soil texture / colour particularly distinctive; are there remains of particular mining / quarrying; are the rocks distinctive in type or size / shape; are there signs of coastal erosion?	Free draining	Wet peaty acid	Sand dunes	
		Acidic loams	loam		
		Granite	Killas (slates)	Sandstone	
		Mining	Streaming	Quarrying	

That’s our Parish

Yth yw agan Pluw

Local Landscape Character Assessment for Penwith

Parish LLCA Training



LLCA Fieldwork – recording information

Parish: <u>Sennen</u>		LCT type:		Date:	Assessor:
Character attribute	Key Features	Guidance notes			Assessor comments
	Biodiversity Are there any landscape features which could shelter or feed protected species such as bats, birds, dormice, reptiles; are there any invasive species (<u>e.g.</u> Japanese Knotweed / Himalayan Balsam); are there any areas which appear not to have been altered through management? Are there any ecological designations such as SSSIs or SACs?	Woodland	Ancient / veteran trees	Mature hedgerows	
		Mixed scrub	Heathland	Purple Moor Grass / Rush Pastures	
		Exposed rock / quarry faces	Coastal sand dunes	Vegetated shingle	
Land Cover and Land Use	Vegetation Is there one main type of vegetation or is there a mosaic pattern; are different vegetation types evenly distributed; does the vegetation seem natural / ancient or introduced / managed?	Woodland	Plantation	Scrub	
		Heath	Moorland	Rough ground	
		Grassland	Coastal / cliff	Ornamental / landscaped	
	Land use Is the land productive farmland; is the main use recreational; is there more than one use and are there obvious conflicts / issues?	Arable	Pasture	Industry	
		Farm buildings	Residential properties	Playing field / sports pitch	
		Private <u>e.g.</u> Golf course	Tourist <u>e.g.</u> camp site	Private <u>e.g.</u> hotel grounds	

That's our Parish

Yth yw agan Pluw

Local Landscape Character Assessment for Penwith

Parish LLCA Training

Land cover and land use



That's our Parish

Yth yw agan Pluw

Local Landscape Character Assessment for Penwith

Parish LLCA Training

LLCA Fieldwork – recording information

Parish: <u>Sennen</u>		LCT type:		Date:	Assessor:
Character attribute	Key Features	Guidance notes			Assessor comments
Buildings and Settlement pattern	Buildings Are the buildings older or modern; what type and scale are they; have they been extended and how; do they have any distinctive design features or materials used; how do they sit in the landscape?	<u>Detached farm houses</u>	Farm buildings and houses	<u>Miners cottages</u> / houses	
		Residential	Holiday accommodation	Industrial / workplaces	
		Community facilities	Converted / extended	Traditional / Contemporary	
	Settlements Are buildings isolated or grouped; are they clustered around older settlements / <u>churches</u> or have they expanded into the landscape; how big are the settlements; is there a clear gap between them?	Isolated	Scattered	Clustered	
		Linear	Separate	Continuous	
		Villages	Farmsteads	Hamlets	

LLCA Fieldwork – recording information

Parish: <u>Sennen</u>		LCT type:		Date:	Assessor:
Character attribute	Key Features	Guidance notes			Assessor comments
Transport and infrastructure	Transport pattern Are the roads main roads through the landscape or smaller lanes connecting farmsteads / old mine sites; do they have verges / pavements / tree tunnels / no obvious boundaries; is there a lot of signage; are they lit. What types of off-road public access are present (<u>i.e.</u> public rights of way easy, Open Access Land or other; are they easy to find / navigate; what condition are they in; are they along old routes?	Main	Minor	Straight	
		Winding	Tramways / byways	Open	
		Defined	Well managed	Overgrown	
	Infrastructure What type? Where is it located? Is it historic or a recent addition? Is it prominent?	Railway	Harbour / port	Airport / heliport	
		Mining	Masts / Pylons	Solar / Turbines	
		Glasshouses / poly tunnels	Large agricultural	Large car parks	

That’s our Parish

Yth yw agan Pluw

Local Landscape Character Assessment for Penwith

Parish LLCA Training



First and Last – Our Living Working Landscape



Transport pattern

That's our Parish

Yth yw agan Pluw



Local Landscape Character Assessment for Penwith

Parish LLCA Training



LLCA Fieldwork – recording information

Parish: <u>Sennen</u>		LCT type:		Date:	Assessor:
Character attribute	Key Features	Guidance notes			Assessor comments
Historic and Distinctive Features	Historic Features Are there prominent features or areas; are they still in use; what is the dominant time period; is the setting of the feature clear and important to understanding it; are there key views of or between features; does the landscape have a clear connection to its past?	Mine complexes	Mine houses / chimneys	Quarries	
		Churches / chapels	Meeting rooms	Monuments	
		Burial sites	Prehistoric settlements	Estates / houses	
	Distinctive Features Are there key local features which may not already be protected but are valued; do they have distinct settings?	Historic	Tree tunnels	Distinctive trees	
		Rock outcrops	Turbines / pylons	Local stone	
		<u>Sign posts</u>	Skyline		

Historic features



That's our Parish

Yth yw agan Pluw

Local Landscape Character Assessment for Penwith

Parish LLCA Training

Distinctive features



That's our Parish

Yth yw agan Pluw

Local Landscape Character Assessment for Penwith

Parish LLCA Training

LLCA Fieldwork – recording information

Parish: <u>Sennen</u>		LCT type:		Date:	Assessor:
Character attribute	Key Features	Guidance notes			Assessor comments
Experiencing the landscape	Aesthetic / Sensory Is it an audibly quiet landscape; is there visual clutter even if it is quiet; what is the level of artificial noise; is there light pollution; do you notice any distinctive change between seasons / tidal state / wind direction; how does the landscape make you feel?	Calm	Active	Busy	
		Natural	Artificial	Remote	
		Sheltered	Upland	Coast	
	Key Views and Visual Amenity Are there any local vantage points or valued views; do they relate to historic use <u>i.e.</u> coastal watch points, legends; are the views enclosed or expansive; are they within the landscape or looking over it; what are the key features in the view?	Open	Exposed	Panoramic	
		Enclosed	Funnelled	Sparse	
		Cluttered	Promontory	Focal points	

That’s our Parish

Yth yw agan Pluw



Local Landscape Character Assessment for Penwith

Parish LLCA Training



Experiencing the landscape



That's our Parish

Yth yw agan Pluw

Local Landscape Character Assessment for Penwith

Parish LLCA Training

LLCA Fieldwork – recording information

<p>Key Characteristics</p> <p>What makes this area different to the next? List in bullet points, use attribute headings to guide your description.</p>		
<p>Condition</p> <p>How is the area managed; does it appear as though it is managed as one larger unit; what state are the area's key features in; is there an obvious cause of any degradation; are there potential areas for improvements?</p>		
<p>Relationship to adjoining character areas</p> <p>Landscape character boundaries are usually transitional, describe how this area relates to neighbouring areas, are they connected, shared features / characteristics.</p>	 	
<p>Photographs</p> <p>Date / time / image number range for particular images / panoramas (use the record sheet for all images, note the clearest or most descriptive here). Record the overall character as well as key features / views / characteristics / management issues</p>		

That's our Parish

Yth yw agan Pluw



Local Landscape Character Assessment for Penwith

Parish LLCA Training



LLCA Fieldwork – recording information

Survey Form

Please remember to do the following when completing and compiling your Survey Forms and Maps:

- Make sure the LCT which you are reviewing is noted on the top of the form.
- Mark the survey form location point clearly on the LCT Plan (see Parish Pack).
- Make sure the survey form is clearly cross referenced to its location on the LCT map.
- Mark-up any cherished views (using an arrow to indicate the direction of view) on the LCT map and annotate what the view is of and if it is from a specific point e.g. resting point, historic feature etc.
- Mark up the location, type and/ or names of features which are of visual significance and contribute to the character of the landscape on the LCT map.
- Return the marked-up map and survey forms.

That’s our Parish

Yth yw agan Pluw



Local Landscape Character Assessment for Penwith

Parish LLCA Training



Workshop 2 – Understanding the Landscape Character Hierarchy



Yth yw agan Pluw

Parish LLCA Training – what is PLP and Project 1.2

National Character Area Profiles – NCA156 – West Penwith



That's our Parish

Yth yw agan Pluw



Local Landscape Character Assessment for Penwith

Parish LLCA Training



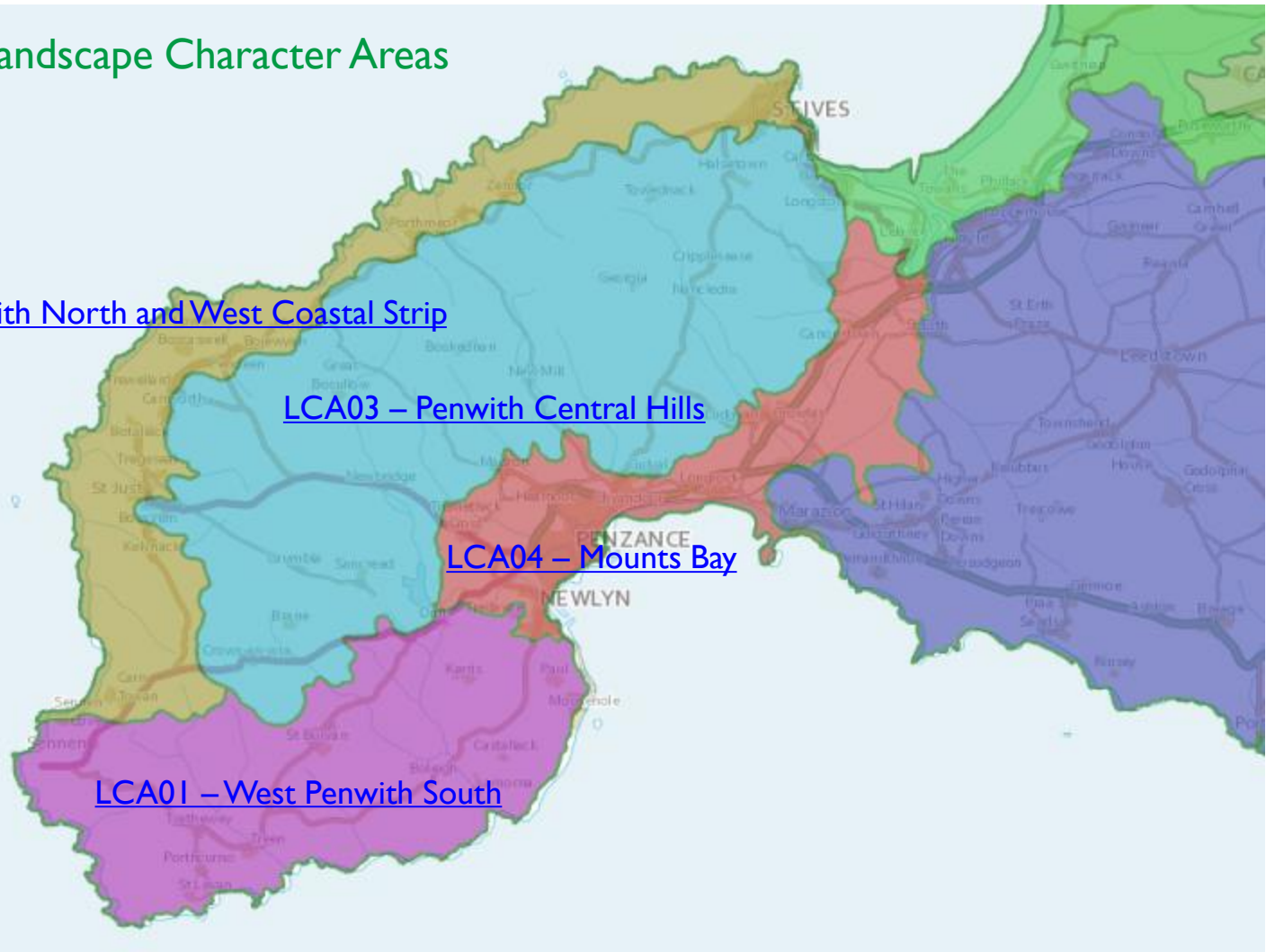
Cornwall Landscape Character Areas

LCA02 – West Penwith North and West Coastal Strip

LCA03 – Penwith Central Hills

LCA04 – Mounts Bay

LCA01 – West Penwith South



That's our Parish

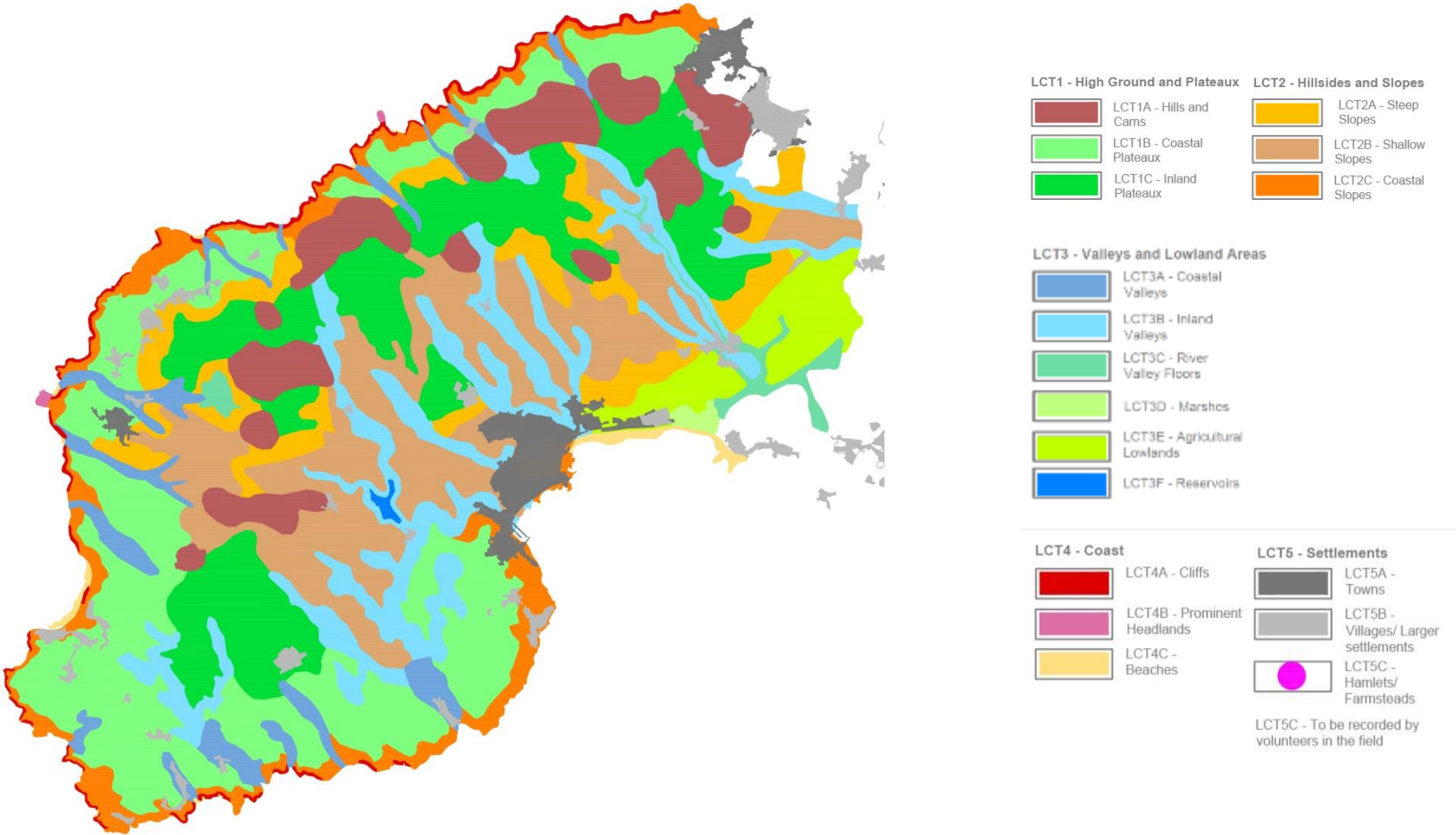
Yth yw agan Pluw

Local Landscape Character Assessment for Penwith

Parish LLCA Training



Penwith Landscape Character Types



That's our Parish

Yth yw agan Pluw



Local Landscape Character Assessment for Penwith
Parish LLCA Training



Workshop 2

- Work in groups.
- **Review the National Character Area profile for NCA156 West Penwith** (printed copy provided)
FOR PURPOSES OF THIS EXERCISE REVIEW PAGES 5 TO 8 ONLY (this is the first 4 pages of the description including the key characteristics). To get a feel for the type of wording and descriptions used. Note down if you agree or disagree with particular statements made in the description.
- **Review one of the Cornwall Landscape Character Area descriptions**, also provided in hard copy on the tables. Note how some of the headings compare to the survey forms and again note down if you agree or disagree with particular statements made in the description. Do you think the level of detail is good, or does it lack local definition? Use highlighter pen to pick out relevant descriptions
- **Review the draft Landscape Character Type map and compare how it relates to the NCA and LCA areas.** Does it pick up more detail, if so which detail?

Workshop 3 – Desk based assessment - The Parish Packs, Survey Maps and Draft Information



Parish Packs

- CEC have compiled Parish Packs based on desk study information and preliminary field work.
- Parish Packs are the basis for your field survey work, and will be supplemented through this assessment process. On completion of the assessment it will contain all the information relevant to the Parish, for future Parish projects as required.
- You each have a contents list to take away to show the detail provided to help you carry out the survey work.
- No need to know it all or have to look at it all – background information for use if needed, but not essential to be able to participate in the field survey.
- Cornwall Council’s Interactive Map – contains the majority of this information:<https://map.cornwall.gov.uk/website/ccmap/>

Volume 12 – Sennen Parish Pack			
Document / Drawing number	Item	Output	Issue date(s)
Guidance			
CEC3247-V12-G1	Evening presentation of LLCA, including links to resources such as Cornwall Council LCAs and NCAs	Word document / pdf	22.09.22
CEC3247-V12-G2	General consultation panels	Pdf	22.09.22
CEC3247-V12-G3	LCT overview and Parish Summary, Draft LLCA report (end product)	Word document / pdf	-
CEC3247-V12-G4	LCT Descriptions, Draft LLCA report (end product)	Word document / pdf	-
LLCA Outputs (deliverables)			
CEC3247-V12-D1	LCT Plan	Plan pdf	Draft 22.09.22
CEC3247-V12-D2	Key Parish Features and Cherished Views	Plan showing parish highlighted	-
Survey Material			
CEC3247-V12-S1	Survey form	Word document / pdf	22.09.22
CEC3247-V12-S2	Photo record form	Word document / pdf	22.09.22
CEC3247-V12-S3	Survey Base Mapping – A1 Parish wide using 1:25k OS Explorer with LCTs (outline x1 and hatch x1)	Plan showing parish highlighted	22.09.22
CEC3247-V12-S4	Aerial Coverage – A1 Parish wide (plain x1, plus outline LCTs)	Plan showing parish highlighted	22.09.22
Background Information – Plans – A3 Colour (based on 1:10,000 OS master map unless stated otherwise)			
CEC3247-V12-01	Location Plan – 1:25,000 A3 (based on 1:10,000 raster tiles)	Plan showing parish highlighted	22.09.22
CEC3247-V12-02	Landform	Plan showing parish highlighted	22.09.22
CEC3247-V12-03	Landscape Character and LDU's – 2xA3	Plan showing parish highlighted	22.09.22

That’s our Parish

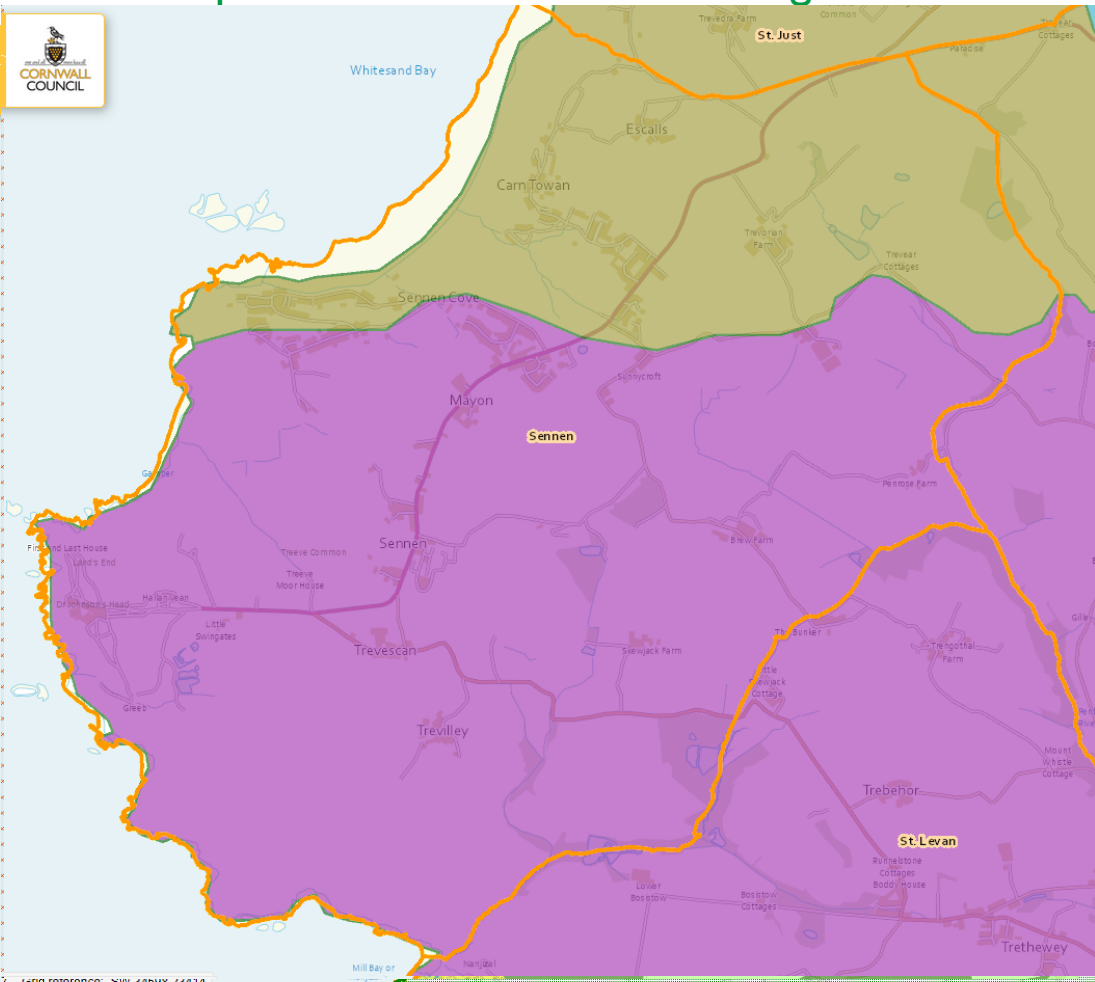
Yth yw agan Pluw



Local Landscape Character Assessment for Penwith
Parish LLCA Training



Desktop information to review during fieldwork



- Landscape Character Areas
- Area of Outstanding Natural Beauty
- Area of Great Landscape Value
- Historic Landscape Classification
- Heritage Coast
- Schedule Monuments
- Listed Buildings
- Special Areas of Conservation
- Sites of Special Scientific Interest
- County Wildlife Sites
- Tree Preservation Orders

That's our Parish

Yth yw agan Pluw

Local Landscape Character Assessment for Penwith

Parish LLCA Training

The 8 Landscape Character Types in Penwith

LCT1 – High Ground and Plateaux

LCT1A – Hills and Carns

LCT1B – Coastal Plateaux

LCT1C – Inland Plateaux

LCT2 – Hillsides and Slopes

LCT2A – Steep Slopes

LCT2B – Shallow Slopes

LCT2C – Coastal Slopes

LCT3 – Valleys and Lowland Areas

LCT3A – Coastal Valleys

LCT3B – Inland Valleys

LCT3C – River Valley Floors

LCT3D – Marshes

LCT3E – Agricultural Lowlands

LCT3F – Reservoirs

LCT4 – Coast

LCT4A – Cliffs

LCT4B – Prominent Headlands

LCT4C – Beaches

LCT5 – Settlements

LCT5A – Towns

LCT5B – Villages

LCT5C – Hamlets/Distinct Farmsteads

those not occurring in Sennen in *italics*



LCT2C – Coastal Slopes - View from Mayon Green

That's our Parish

Yth yw agan Pluw

Local Landscape Character Assessment for Penwith

Parish LLCA Training



LCT1B – Coastal Plateau with LCT3A Coastal Valleys in the distance - View from Chapel Carn Brea

That's our Parish

Yth yw agan Pluw

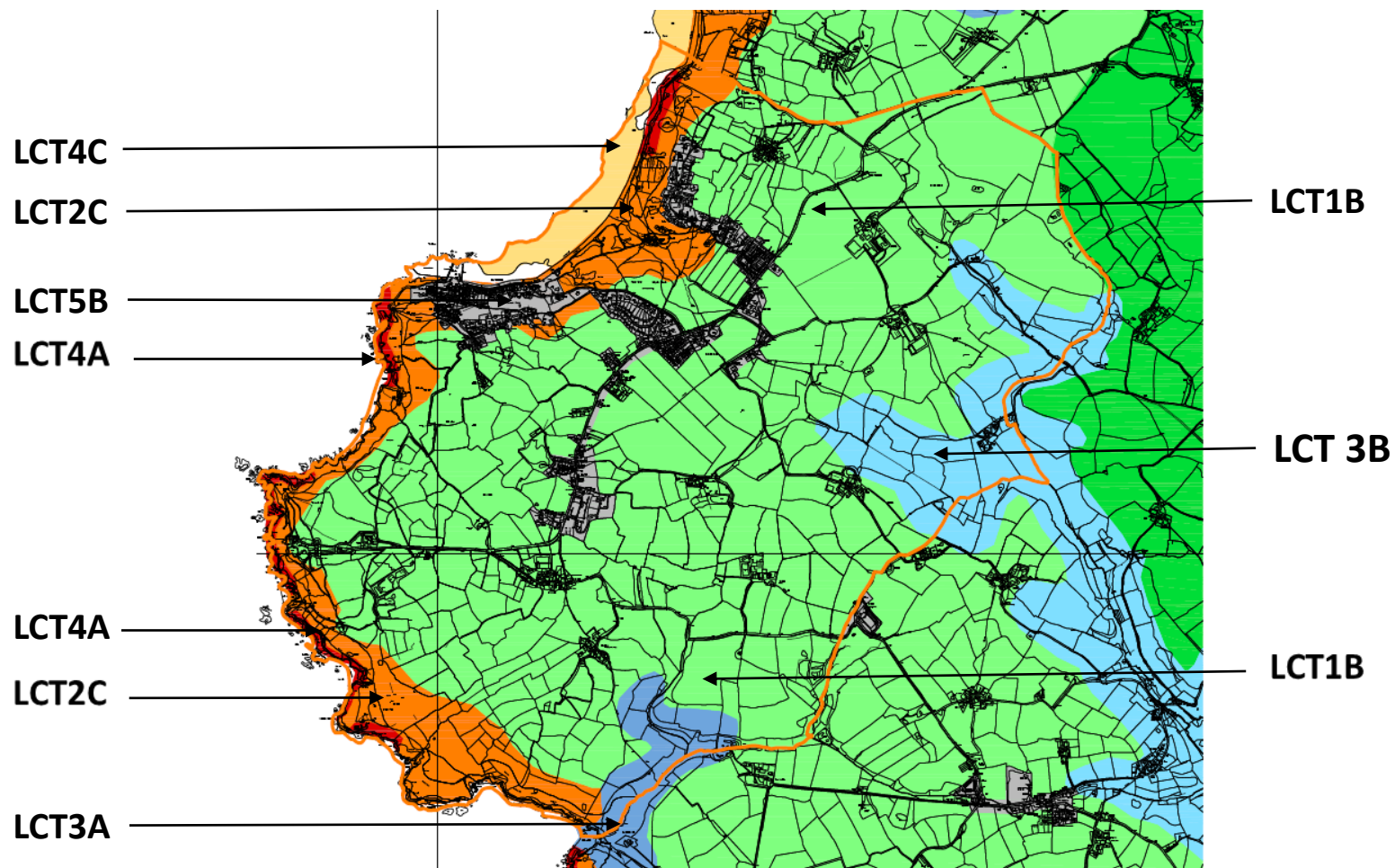


Local Landscape Character Assessment for Penwith

Parish LLCA Training



Draft Information to review during fieldwork - Landscape Character Types in Sennen



That's our Parish

Yth yw agan Pluw

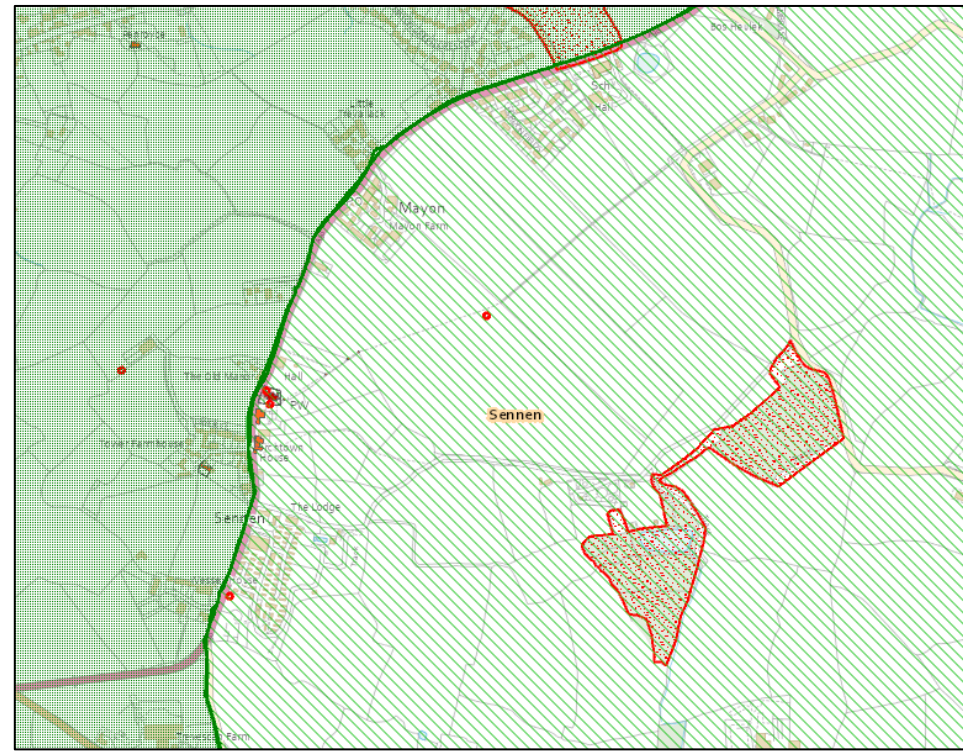
Local Landscape Character Assessment for Penwith

Parish LLCA Training

Parish Pack Info – Aerial with LCTS and Designations and Assets



Compare aerials to OS mapping for ecology, landscape and heritage designations



AONB, AGLV, County Wildlife Site, Scheduled Monuments, Conservation Area, Listed Buildings

That's our Parish

Yth yw agan Pluw

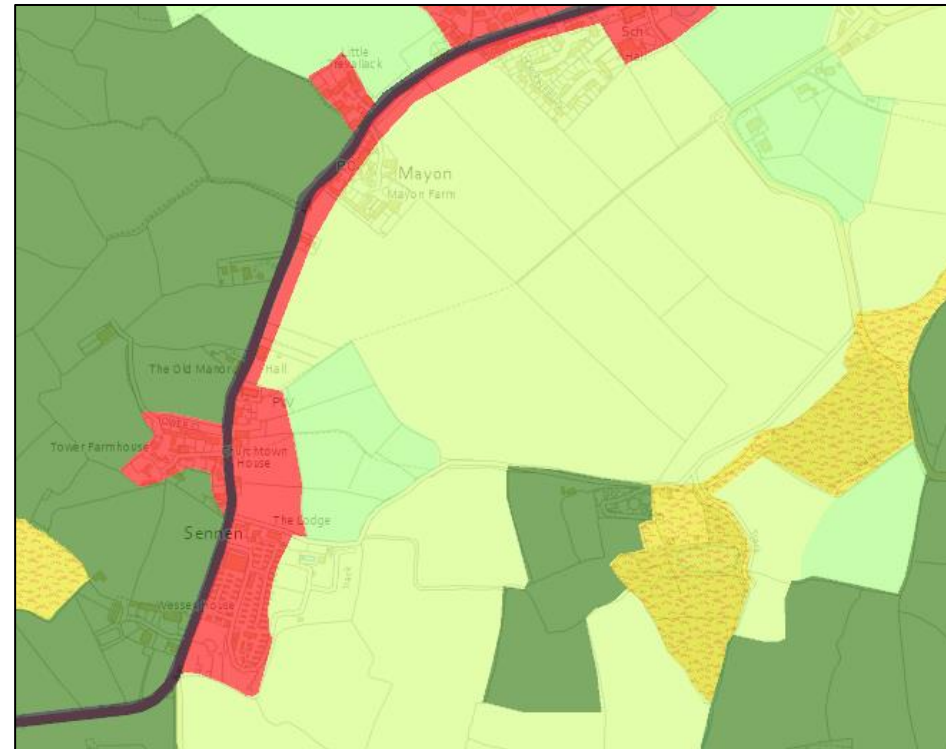
Local Landscape Character Assessment for West Penwith

Parish LLCA Training – what is PLP and Project 1.2

Parish Pack Info – Aerial with LCT and Historic Landscape Character



Study aerials – look for different land uses/ land cover, settlement pattern is clearer on these aerial maps

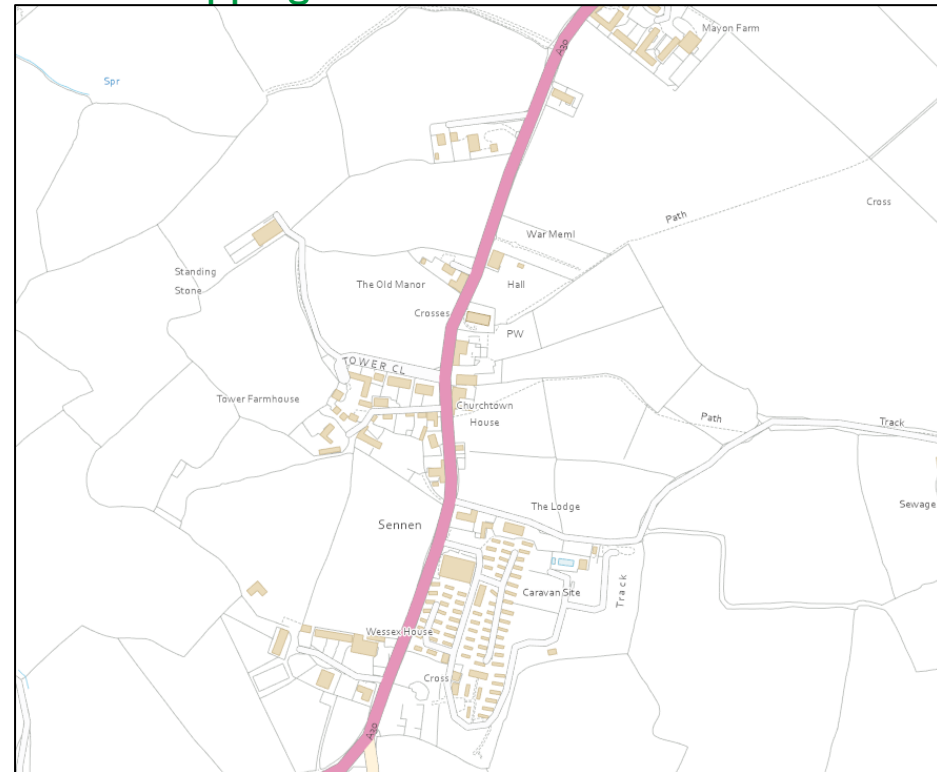
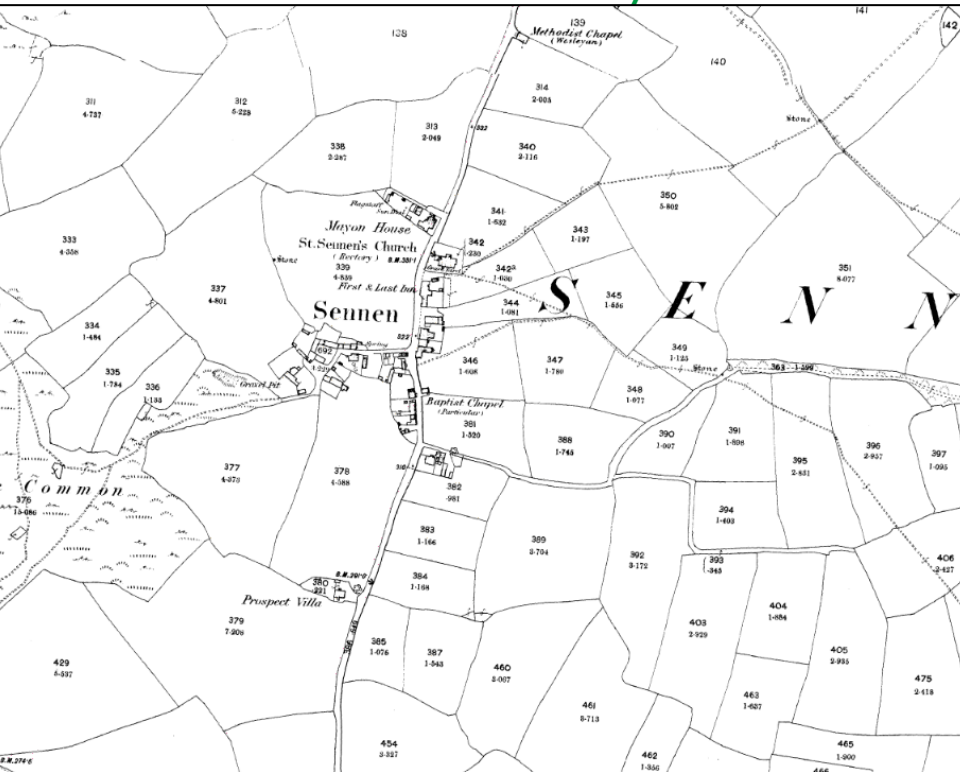


Look at HLC – will help to understand field enclosures sizes/ shapes, location of historic upland rough ground or ornamental landscapes

That's our Parish

Yth yw agan Pluw

Cornwall and the Isles of Scilly's Historic Environment Mapping



- First edition maps – look for changes to field patterns and ancient hedges which remain
- Use the one line mapping to check the area you are assessing

That's our Parish

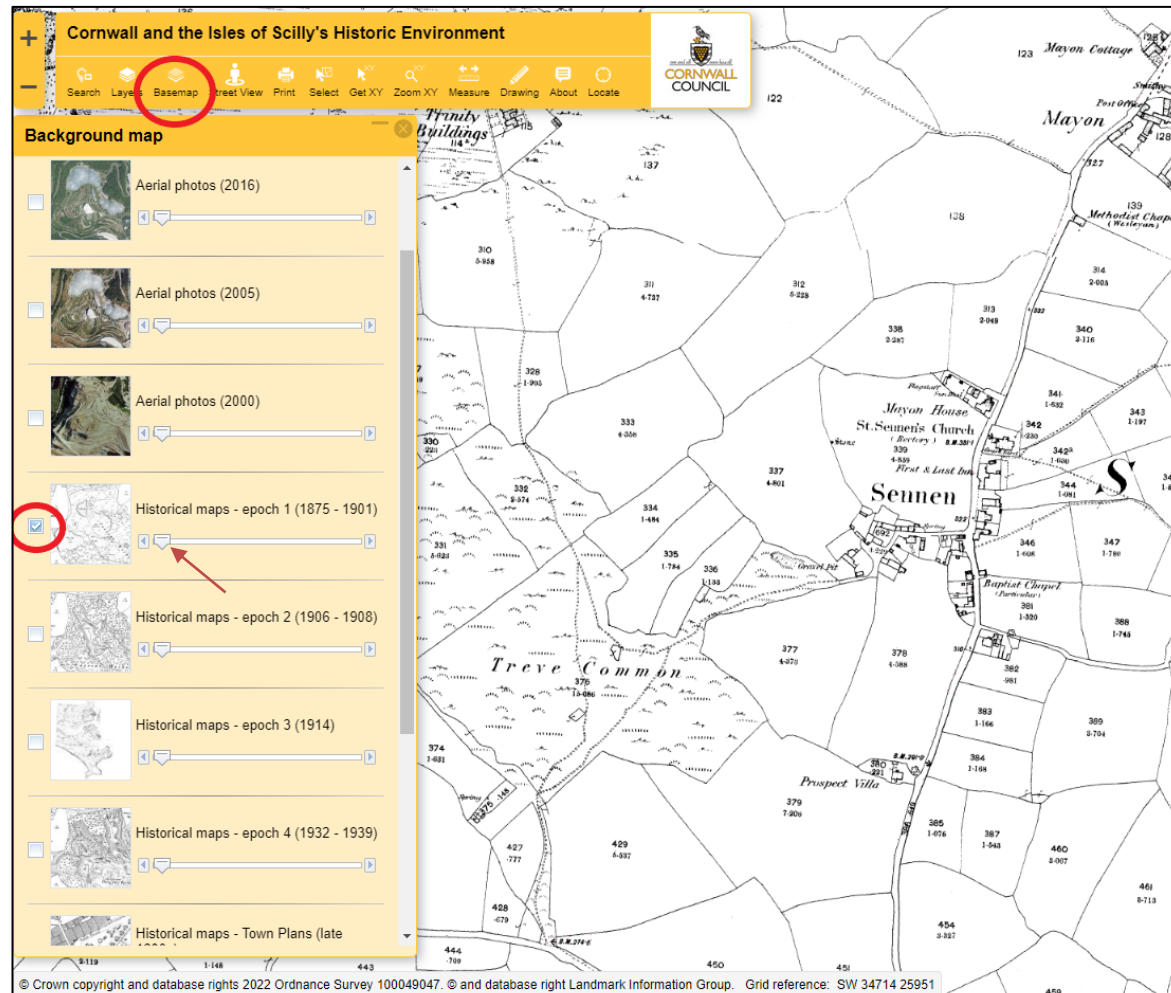
Yth yw agan Pluw

Local Landscape Character Assessment for West Penwith

Parish LLCA Training – what is PLP and Project 1.2

Cornwall and the Isles of Scilly's Historic Environment Mapping

- First edition maps – look for changes to field patterns and ancient hedges which remain
- [Cornwall and the Isles of Scilly's Historic Environment](#)



That's our Parish

Yth yw agan Pluw

Local Landscape Character Assessment for West Penwith

Parish LLCA Training – what is PLP and Project 1.2

LLCA Fieldwork – OS Explorer survey map for recording information



That's our Parish

Yth yw agan Pluw

Local Landscape Character Assessment for Penwith

Parish LLCA Training

LLCA Fieldwork – Aerial mapping for analysis and recording information



That's our Parish

Yth yw agan Pluw

Local Landscape Character Assessment for Penwith

Parish LLCA Training

Workshop 3

- Work in groups.
- Spend 10 minutes looking through the Parish Packs, look at the maps and different information within them.
- Look at the loose copies of the survey maps – aerial photographs, OS Explorer Maps and draft Landscape Character Types.
- Choose one section of a LCT and look at the background information in the Parish Pack. Can you see if there are any rights of way, historic designated assets or ecology designations in your map area? Is your area covered by the AONB or AGLV?
- Choose a draft Landscape Character Type (LCT) and review against this information.

That's our Parish

Yth yw agan Pluw



Local Landscape Character Assessment for Penwith
Parish LLCA Training



Summary of Morning Session – any questions, observations, comments?



Presentation followed by Workshop 4 – Introduction to Fieldwork



Surveying – key things to do before, during and after your field work

- Review the Parish Pack information for the LCT area you are covering.
- Decide on your approach:
 - Mark out a route and potential locations for survey points within the geographical area marked as an LCT.
 - Undertake surveys for that geographically discrete area of LCT and either submit survey forms from each point you surveyed (more than one is recommended) or compile those survey points into a single survey form and return to Nicole at PLP.
- **Be sure to mark a map that you will need to return to PLP, with:**
 - the survey position from which you wrote the field description (code the map and description with the same reference)
 - any photo taken and it’s direction of view (code the map and the photo with the same reference)

Penwith Landscape PartnershipKynsa ha Diwettha – Agan Tirwedh Bewa ha GonisFirst and Last – Our Living Working Landscape

Volume 09 – Madron ParishReturned Survey Information

What we need back from you!

1. Annotated LCT plan

Please ensure your LCT plan is annotated to include the following as a minimum:

- viewpoint locations (cross referenced to photo record forms) with arrows indicating the direction of the view
- survey point locations (cross referenced to the survey forms)
- cherished views (of what, what direction and from where)
- features (locations, types or names/descriptions)
- mark up the location of hamlets/ farmsteads
- any other points of interest

2. Completed Survey Forms for each LCT

Please ensure you complete a separate form for each survey point and that you note the following on each survey form:

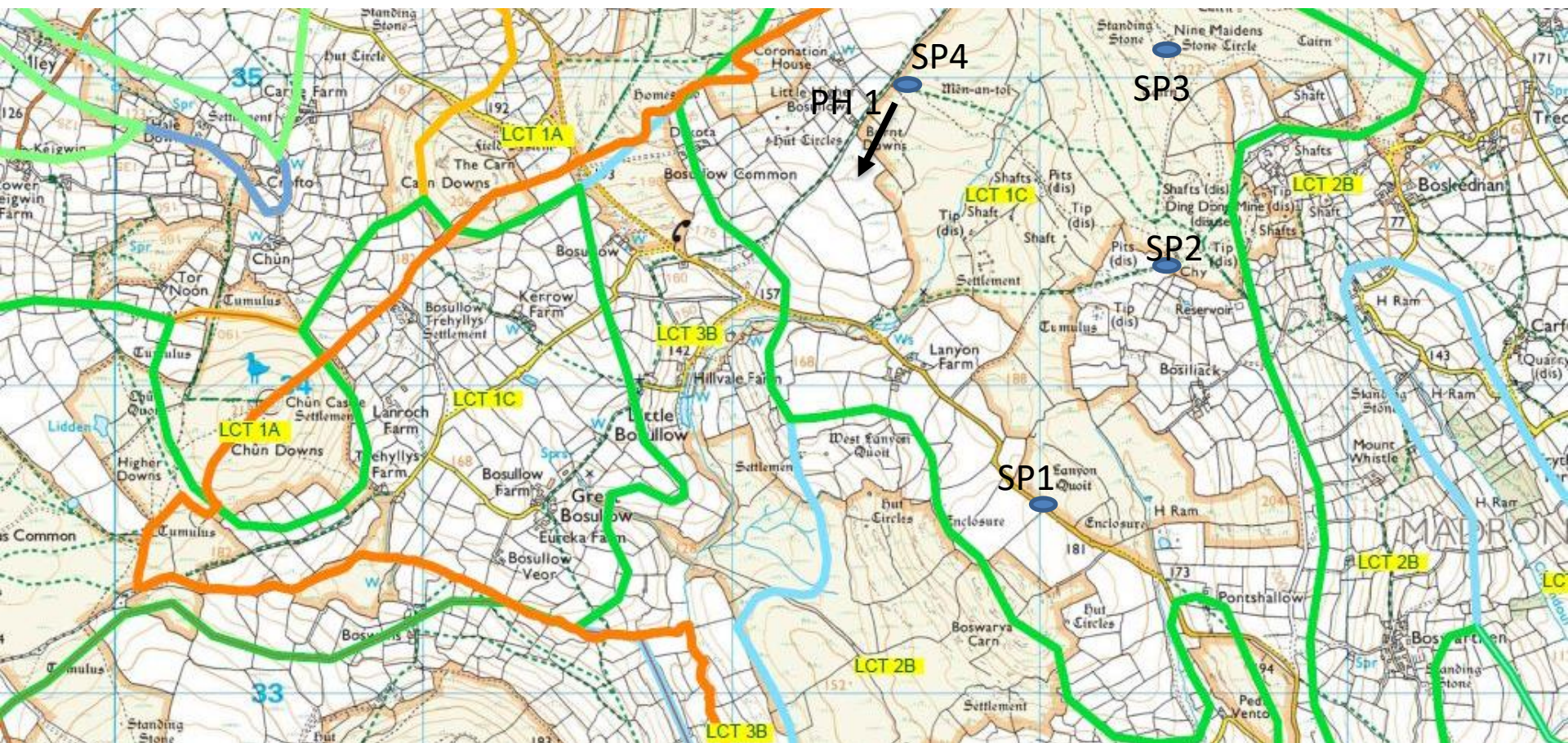
- name of the LCT you are reviewing
- clear cross reference to the survey point on the annotated LCT plan
- circle/ underline relevant words in the guidance section or provide clear descriptive text.

3. Completed Photo Record Form for each LCT

Please ensure that each photo you take is accompanied by a photo record form to include the following:

- Clear cross reference to the photo point on the annotated LCT plan
- Purpose of the photo
- Description of the photo

LLCA Fieldwork – recording information – marking up maps



SP1 = LCT 1c Survey Point 1

PH 1 = Photo Location Point 1

That's our Parish

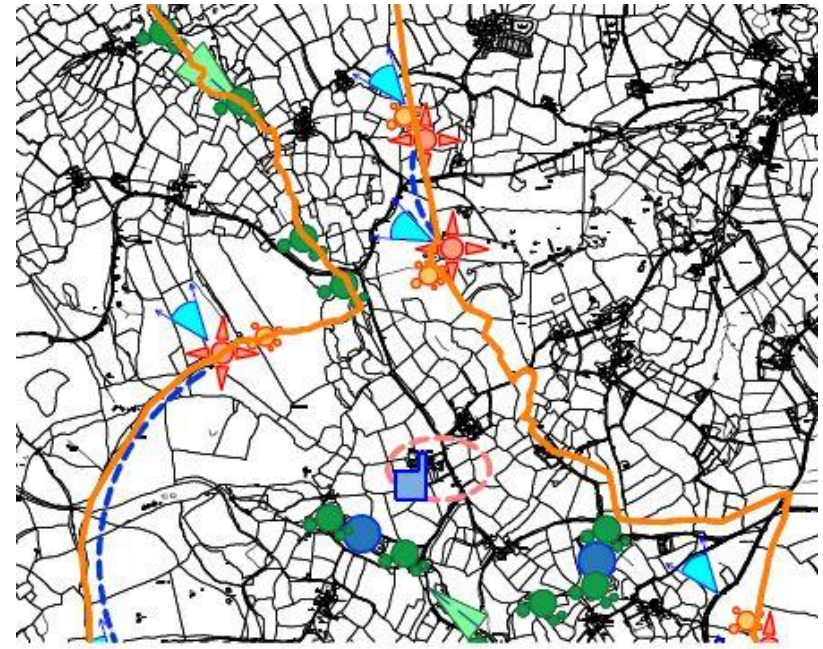
Local Landscape Character Assessment for Penwith

Yth yw agan Pluw

Parish LLCA Training

Other information to record during fieldwork – Special Places, Cherished Views and Key Features

- We would also like to record those places that are special to you, notable or important features in the landscape in the landscape, or cherished or distinctive views.
- Mark the position on a map, take a photo and describe what it is you capturing (annotate a plan with the photo location, direction of view, and add location reference to the photo).
- This could include:
 - Place names
 - Distinctive built features i.e. bridges, hedges styles, fords, least, gates, stiles, crosses, landmarks, buildings, monument, main hills, valleys, beaches, settlement types
 - key views and special places where people are known to stop and take in the landscape.



That's our Parish

Yth yw agan Pluw

Local Landscape Character Assessment for Penwith

Parish LLCA Training

Completing survey forms

- A3 weather writers are provided, along with survey forms and maps.
- More survey forms can be printed if needed – please get in touch with Nicole.
- Survey in pairs for safety and to exchange opinions. Check with other groups to make sure you are all recording a similar level of information.
- Plan your site survey work – weather, locations, access (only publically accessible land) which LCT area are you going to look at. Before you go out review the desk study data for the area you plan to survey.
- Complete the form in the field, looking 360 degrees around from that position at the LCT in all directions .
- When you get back home, process and review the information, referring back to the Parish Pack background information as required. Submit individual survey point forms or a ‘merged’ overall form for the LCTs.
- Landscape character assessment is a factual description of the elements and features which come together to create the overall landscape. Is it not about recording what you do and don’t like. You need to record what you may consider an eyesore or a treasure in the same factual way.
- If possible we would like you to type up forms into word documents once you have completed site survey work, but this is not essential.

That’s our Parish

Yth yw agan Pluw



Local Landscape Character Assessment for Penwith
Parish LLCA Training



Taking photographs

- Cameras are provided, but you can use your own.
- Record image numbers and location – mark location and direction of view on a map, or use GPS if available.
- To always make sure there is a record of the photo's location, use the white boards provided to:
 - write the location of the image (grid reference, or description and direction of view)
 - take a photo of the white board in the view,
 - then take a second photo without it.
- Photos should cover the overall character of the LCT, particular cherished or favourite views, as well as photos of specific features and elements:- buildings, trees, degraded areas or issues.
- When returning from your survey, sort the photos and choose the best photos (10 max) per survey point – enter these in the photograph record sheet.
- Send photos and location reference sheets to Nicole at PLP for downloading at the end of your survey.
- CEC will keep records of photos for future reference, and include some in the final reports. Only those provided with location reference, and LCT name will be used.

That's our Parish

Yth yw agan Pluw



Local Landscape Character Assessment for Penwith

Parish LLCA Training



Taking photographs

Photo Record Form			
<p>Please remember to do the following at each photo point:</p> <ul style="list-style-type: none">• Mark the photo location and direction of view (using an arrow) on the LCT map.• Make sure the image taken is clearly cross referenced to its location on the LCT map.• Make a note of the purpose of the photo, for example to illustrate the sense of openness, relationship with sea, sense of enclosure, a narrow valley, woodland cover, field pattern, farm buildings, mining area or a distinctive feature etc.			
Parish: Sennen	LCT type:	Date:	Assessor:
Image no.	Photo location	Purpose of the photo and photo description	
<i>e.g. DSC001 (name of jpeg image)</i>	<i>e.g. 137389, 032828 looking north west from junction of No Go by Hill and B3306</i>	<i>Purpose of photo e.g. to illustrate small scale fields and strong relationship with the coast and Photo description e.g. view across farmland with low stone hedge boundaries to coast with Botallack in distance</i>	

That’s our Parish

Yth yw agan Pluw



Local Landscape Character Assessment for Penwith
Parish LLCA Training



Site Survey Pointers and Being Safe!

Plan your survey using the maps.

- Choose a good day in terms of weather, for your own safety, amenity and also to be able to take good photographs and have good views of the landscape.
- Choose survey points that are publicly accessible – **do not enter private land!** This means you have to stay on public footpaths and within Open Access Land – this is shown on your survey maps and in the background information.
- Avoid walking on roads if possible. If you do have to walk on a road, please wear high visibility vests and follow the Highway Code pedestrian rules - <https://www.gov.uk/guidance/the-highway-code/rules-for-pedestrians-1-to-35>.
- Do not approach or disturb livestock. Close all gates behind you.
- Make sure you survey in pairs. If you do end up surveying on your own, make sure someone knows where you are and when you are expected to return. Ask them to be your buddy for the day and give them your mobile number.
- Do not put yourself in danger near cliffs and the sea – follow the RNLI rules for safe coastal walking - <https://rnli.org/safety/choose-your-activity/coastal-walking>
- Always wear appropriate clothing, footwear and have sun screen and water with you at all times.

That's our Parish

Yth yw agan Pluw



Local Landscape Character Assessment for West Penwith

Parish LLCA Training – Methodology & Process



Where we will go for field work practice – 2 locations – 3 LCTs

Location 1 - Looking at

LCA1B Coastal Plateaux

meet in Chapel Carn Brea car park

Location 2 - Looking at:

LCT2C Coastal Slopes and

LCT4C Beaches

meet in recreation ground car park
behind the school



That's our Parish

Yth yw agan Pluw

Local Landscape Character Assessment for Penwith

Parish LLCA Training

What's next?



That's our Parish

Yth yw agan Pluw

Local Landscape Character Assessment for West Penwith

Parish LLCA Training – Methodology & Process

Going forward

- In your own time make yourself familiar with the information in the Parish Packs, the maps and equipment provided.
- Allocate people to areas and complete 2 to 4 forms per LCT, at well spread out locations within each LCT. If there is more than one area of the same LCT in the parish, complete at least one form in each area of the same LCT (if the individual areas are large it is better to complete min. 2 in each). –
- **Agree volunteer team survey areas today.**
- Feed completed sheets and photographs back to Nicole by the end of November at the latest.
- Follow up sessions to clarify / ask / discuss can be arranged with Nicole and Kath if needed
- **Provisionally agree a follow up session with the volunteers today.**
- Ask questions via Nicole in the interim, if you are unclear on anything or need guidance / more information.



That's our Parish

Yth yw agan Pluw

Local Landscape Character Assessment for West Penwith
Parish LLCA Training – Methodology & Process

The Project programme



To complete the landscape assessment of the Sennen Parish and combine this work into the final report, the following deadlines need to be met:

- Workshop Character Assessment – Saturday 1st October
- Volunteers carry out surveys in October and November
- All survey forms and photographs to be sent to Nicole before the end of November
- The draft landscape assessment for Sennen will be compiled by Kath at CEC by the end of February
- Public consultation on the draft landscape character assessment in March
- Sennen landscape assessment combined into the overall ‘That’s My Parish’ report by the end of April
- April 28th 2023 Project closes.

If you are unsure, confused or need any guidance / more information, please ask Nicole at PLP.

That’s our Parish

Yth yw agan Pluw

Local Landscape Character Assessment for West Penwith

Parish LLCA Training – Methodology & Process

Questions

Please direct all questions to:

Nicole Broadhurst PLP Community Co-ordinator

01736805307 / 07976731430

Nicole.Broadhurst@cornwallwildlifetrust.org.uk

The Office above Café Dog and Rabbit, St Just

Nicole will liaise with Kath Statham at CEC Ltd on your behalf.

Questions can also be brought to the follow up sessions.



That's our Parish

Yth yw agan Pluw

Local Landscape Character Assessment for West Penwith
Parish LLCA Training – Methodology & Process